

HabasitLINK[®]

M5010 Roller Top 2"

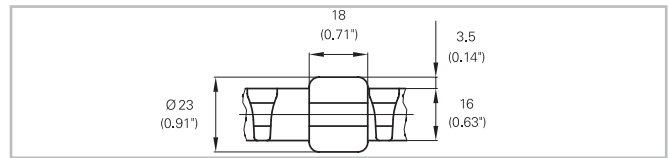
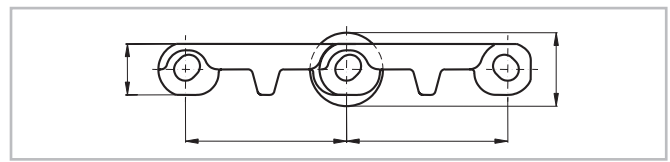
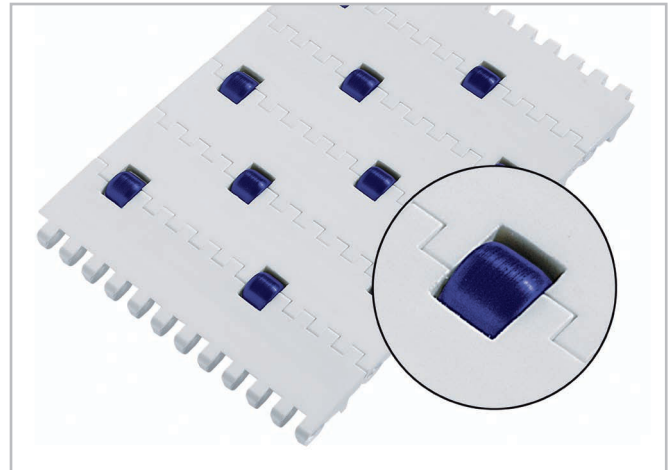


Your Source For Habasit
Belting And Chain

www.StilesEnterprises.com • 1-800-325-4232

Description

- Largest opening 19x2 mm (0.7"x0.08")
- Roller lateral spacing see table belt data
- Rollers row spacing 50.8 mm (2")
- For low back pressure, wearstrips are placed between rollers
- For product driven application wearstrips are placed directly under the rollers
- Open hinge
- Food approved materials available
- Rod diameter 7 mm (0.27")



Belt data

| Belt material | | POM | | | |
|---|------------------------------|----------------------------|----------------------------|----------------------------|----------------------------|
| Rod material | | PA | | | |
| Roller material | | POM | | | |
| Roller lateral spacing per row | mm / inch | 56 / 2.2 | 75 / 3 | 112 / 4.4 | 150 / 6 |
| Roller offset next row | mm / inch | 0 / 0 | 0 / 0 | 56 / 2.2 | 75 / 3 |
| Roller dimension diameter / width | mm inch | Ø 23 / 18 Ø 0.91 / 0.71 | Ø 23 / 18 Ø 0.91 / 0.71 | Ø 23 / 18 Ø 0.91 / 0.71 | Ø 23 / 18 Ø 0.91 / 0.71 |
| Nominal tensile strength F' _N straight run | N/m lb/ft | 20000 1370 | 21000 1438 | 22000 1507 | 22500 1541 |
| Temperature range | °C °F | -40 - 93 -40 - 200 | -40 - 93 -40 - 200 | -40 - 93 -40 - 200 | -40 - 93 -40 - 200 |
| Belt weight m _B | kg/m ² lb/sqft | 13.5 2.77 | 13.5 2.77 | 13.5 2.77 | 13.5 2.77 |

| Diameter of idling rollers (minimum) | | Diameter of support rollers (minimum) | | Diameter for gravity take-up and center drive rollers (minimum) | | Backbending radius for elevators without side guards or hold down devices (minimum) | | Backbending radius for elevators with sideguards or hold down devices (minimum) | |
|--------------------------------------|------|---------------------------------------|------|---|------|---|------|---|------|
| mm | inch | mm | inch | mm | inch | mm | inch | mm | inch |
| 90 | 3.5 | 100 | 4 | 150 | 6 | 150 | 6 | 250 | 10 |

Use the largest possible backbending radius for elevators with side guards or hold down devices.